



Wylfa Newydd Project

6.5.22 ES Volume E - Off-Site Power Station
Facilities: AECC, ESL and MEEG App E10-4 -
Representative viewpoints

PINS Reference Number: EN010007

Application Reference Number: 6.5.22

June 2018

Revision 1.0

Regulation Number: 5(2)(a)

Planning Act 2008

Infrastructure Planning (Applications: Prescribed Forms and Procedure) Regulations 2009

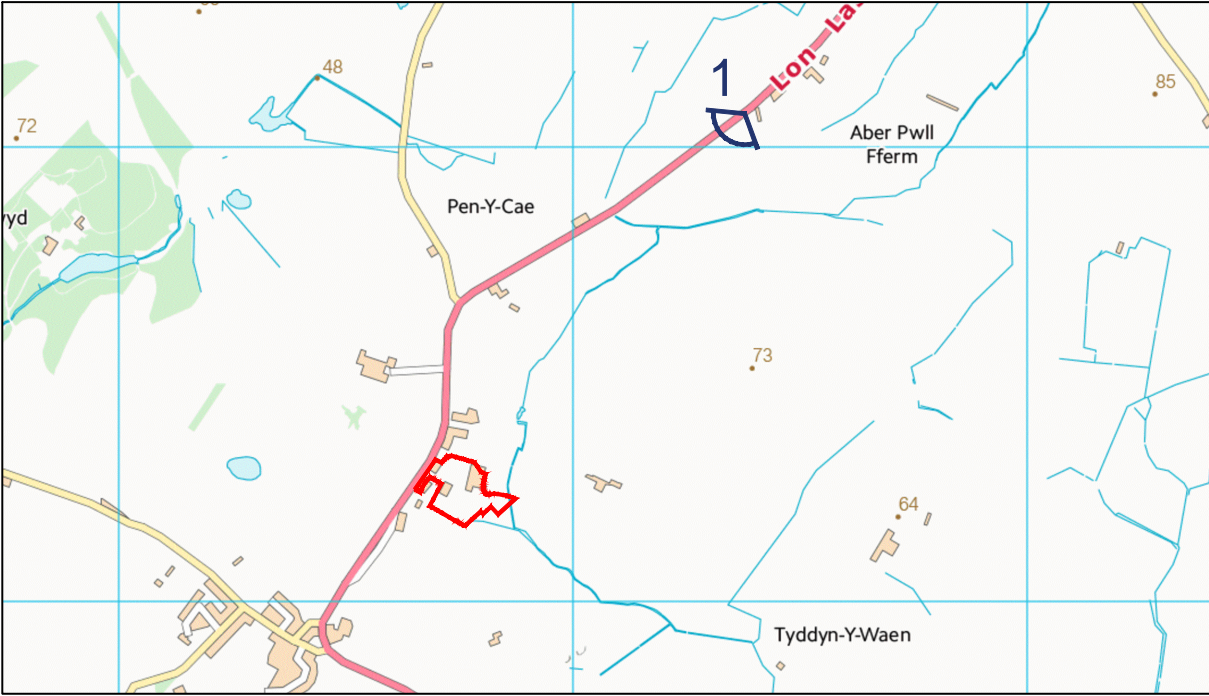
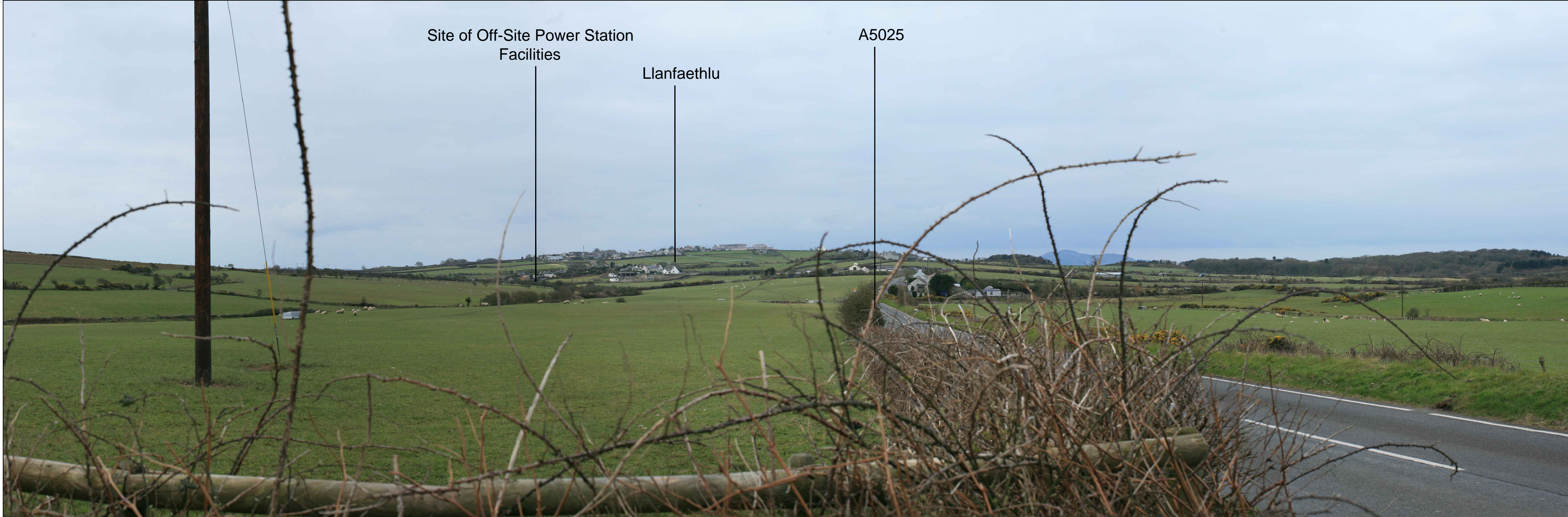
[This page is intentionally blank]

FIGURE E10_04_01

- Legend
- Off-Site Power Station Facilities
 - Viewpoint position and direction

- Notes:
- For larger plans showing all viewpoint locations, refer to figure E10-5; (Application Reference Number: 6.5.27)
 - Photograph taken in March 2016
 - All photographs has been taken with an SLR 50mm focal length lens or digital equivalent and processed as the standard size of 6" by 4". Panoramas may have been cropped but have not been altered or resized.

Viewpoint 1 - Representative view from the A5025, approximately 1km to the north-east of the Off-Site Power Station Facilities site.



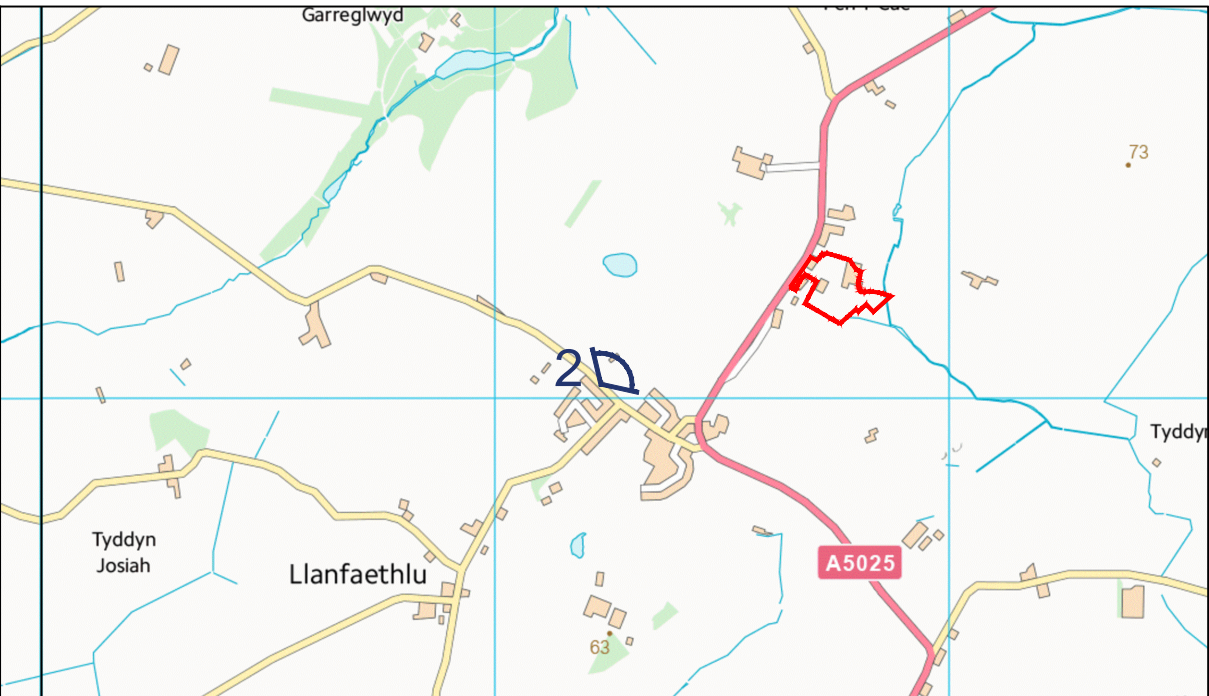
1.0	MAR 18	DCO submission	HNPWL	HNPWL	HNPWL	HNPWL
Rev.	Date	Purpose of revision	Drawn	Check'd	Rev'd	Appr'd
Client			<div><div>HORIZON</div><div>NUCLEAR POWER</div></div>			
Project			WYLFA NEWYDD PROJECT ENVIRONMENTAL STATEMENT			
Drawing title			Appendix E10-4 Representative Viewpoint 1			
Scale @ A3	DRG SCALE				DO NOT SCALE	
Jacobs No.	60PO8077					
Client No.						
Drawing No.	60PO8077_DCO_VOL_E_APP_10_04_01					
This drawing is not to be used in whole or in part other than for the intended purpose and project as defined on this drawing. Refer to the contract for full terms and conditions.						

FIGURE E10_04_02

- Legend
- Off-Site Power Station Facilities
 - Viewpoint position and direction

- Notes:
- For larger plans showing all viewpoint locations, refer to figure E10-5: (Application Reference Number 6.5.27)
 - Photograph taken in December 2017
 - All photographs has been taken with an SLR 50mm focal length lens or digital equivalent and processed as the standard size of 6" by 4". Panoramas may have been cropped but have not been altered or resized.

Viewpoint 2 - Representative view from the settlement edge of Llanfaethlu, approximately 450m to the south-west of the Off-Site Power Station Facilities site.



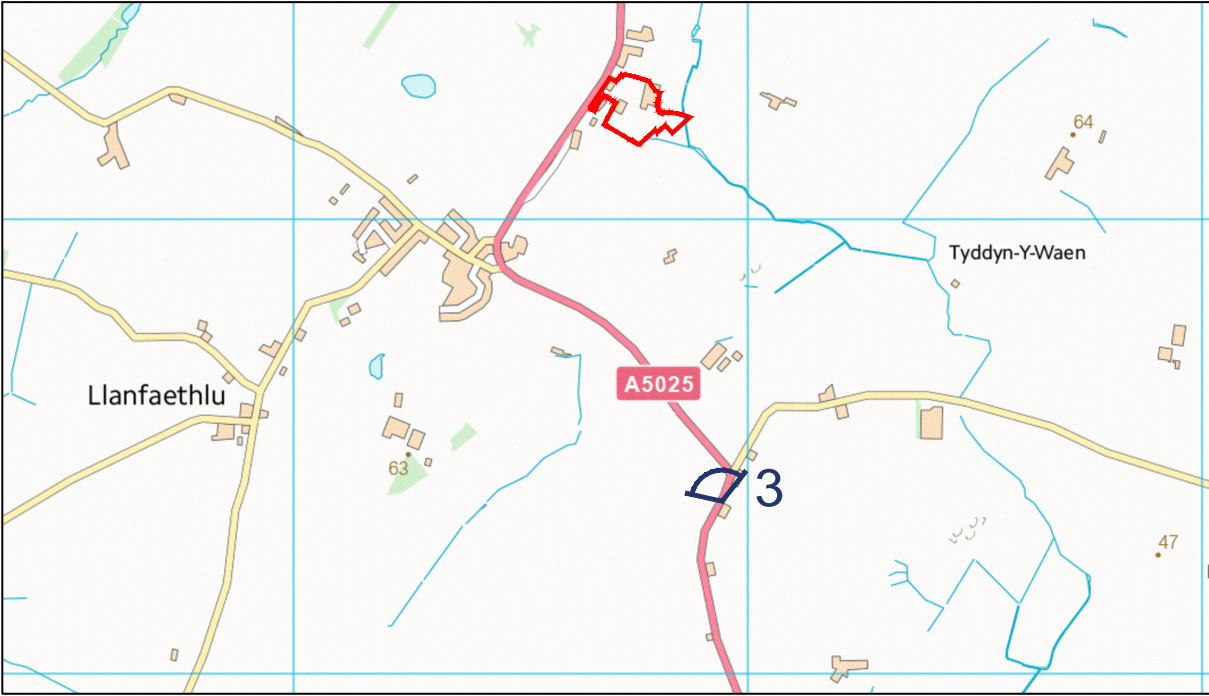
1.0	MAR 18	DCO submission	HNPWL	HNPWL	HNPWL	HNPWL
Rev.	Date	Purpose of revision	Drawn	Check'd	Rev'd	Appr'd
Client			<div><div>HORIZON</div><div>NUCLEAR POWER</div></div>			
Project			WYLFA NEWYDD PROJECT ENVIRONMENTAL STATEMENT			
Drawing title			Appendix E10-4 Representative Viewpoint 2			
Scale @ A3	DRG SCALE				DO NOT SCALE	
Jacobs No.	60PO8077					
Client No.						
Drawing No.	60PO8077_DCO_VOL_E_APP_10_04_02					
This drawing is not to be used in whole or in part other than for the intended purpose and project as defined on this drawing. Refer to the contract for full terms and conditions.						

FIGURE E10_04_03

- Legend
- Off-Site Power Station Facilities
 - Viewpoint position and direction

- Notes:
- For larger plans showing all viewpoint locations, refer to figure E10-5; (Application Reference Number: 6.5.27)
 - Photograph taken in March 2016
 - All photographs has been taken with an SLR 50mm focal length lens or digital equivalent and processed as the standard size of 6" by 4". Panoramas may have been cropped but have not been altered or resized.

Viewpoint 3 - Representative view from the A5025, approximately 700m to the south of the Off-Site Power Station Facilities site.



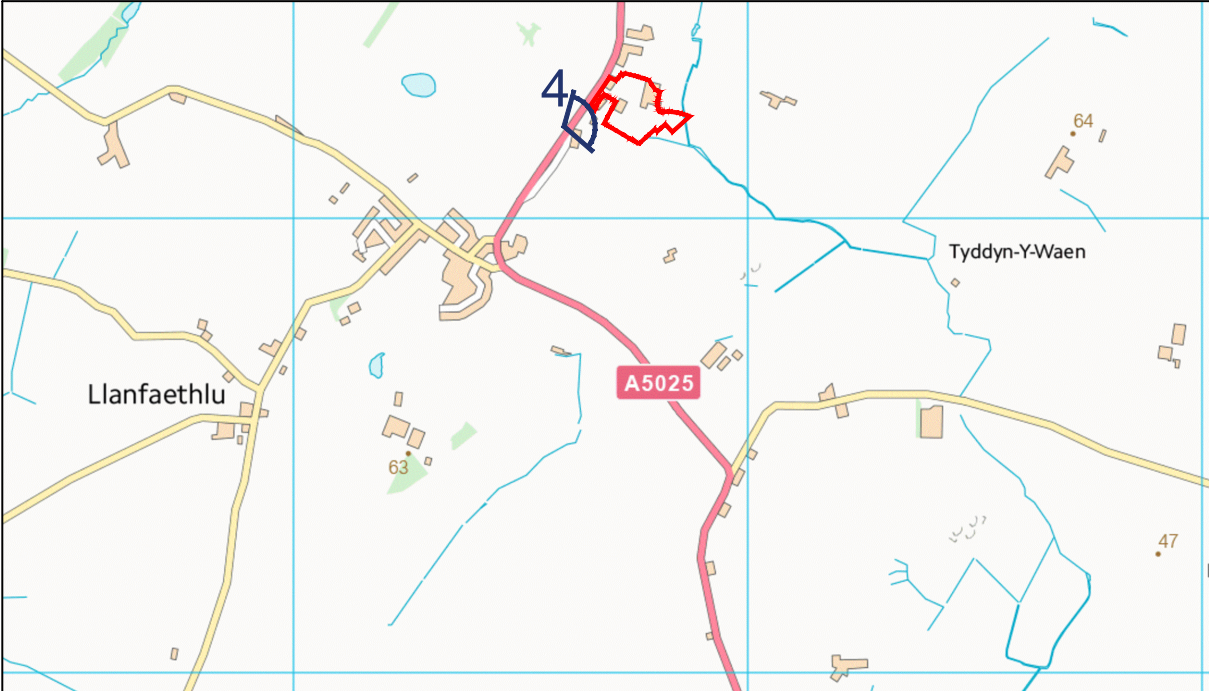
1.0	MAR 18	DCO submission	HNPWL	HNPWL	HNPWL	HNPWL
Rev.	Date	Purpose of revision	Drawn	Check'd	Rev'd	Appr'd
Client			<div><div>HORIZON</div><div>NUCLEAR POWER</div></div>			
Project			WYLFA NEWYDD PROJECT ENVIRONMENTAL STATEMENT			
Drawing title			Appendix E10-4 Representative Viewpoint 3			
Scale @ A3	DRG SCALE		DO NOT SCALE			
Jacobs No.	60PO8077					
Client No.						
Drawing No.	60PO8077_DCO_VOL_E_APP_10_04_03					
This drawing is not to be used in whole or in part other than for the intended purpose and project as defined on this drawing. Refer to the contract for full terms and conditions.						

FIGURE E10_04_04

- Legend
- Off-Site Power Station Facilities
 - Viewpoint position and direction

- Notes:
- For larger plans showing all viewpoint locations, refer to figure E10-5: (Application Reference Number 6.5.27)
 - Photograph taken in December 2017
 - All photographs has been taken with an SLR 50mm focal length lens or digital equivalent and processed as the standard size of 6" by 4". Panoramas may have been cropped but have not been altered or resized.

Viewpoint 4 - Representative view from the A5025, approximately 20m to the south-west of the Off-Site Power Station Facilities site.



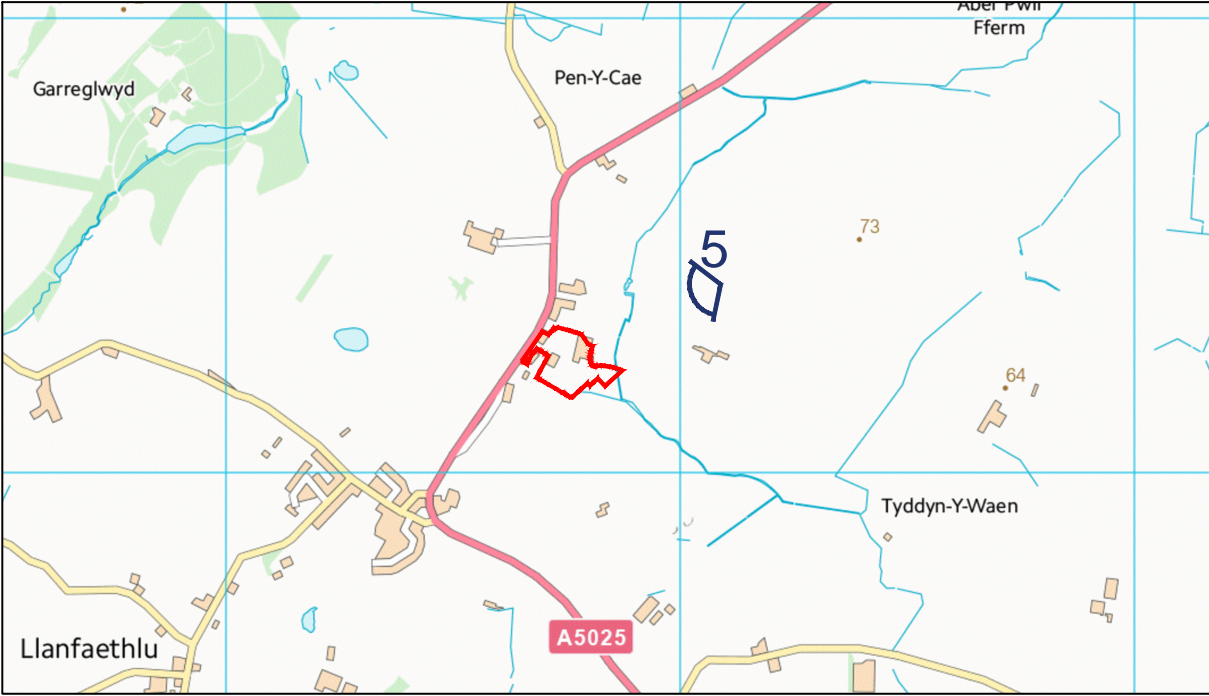
1.0	MAR 18	DCO submission	HNPWL	HNPWL	HNPWL	HNPWL
Rev.	Date	Purpose of revision	Drawn	Check'd	Rev'd	Appr'd
Client			<div><div>HORIZON</div><div>NUCLEAR POWER</div></div>			
Project			WYLFA NEWYDD PROJECT ENVIRONMENTAL STATEMENT			
Drawing title			Appendix E10-4 Representative Viewpoint 4			
Scale @ A3	DRG SCALE				DO NOT SCALE	
Jacobs No.	60PO8077					
Client No.						
Drawing No.	60PO8077_DCO_VOL_E_APP_10_04_04					
This drawing is not to be used in whole or in part other than for the intended purpose and project as defined on this drawing. Refer to the contract for full terms and conditions.						

FIGURE E10_04_05

- Legend
- Off-Site Power Station Facilities
 - Viewpoint position and direction

- Notes:
- For larger plans showing all viewpoint locations, refer to figure E10-5; (Application Reference Number: 6.5.27)
 - Photograph taken in December 2017
 - All photographs has been taken with an SLR 50mm focal length lens or digital equivalent and processed as the standard size of 6" by 4". Panoramas may have been cropped but have not been altered or resized.

Viewpoint 5 - Representative view from the Public Right of Way approximately 500m to the north-east of the Off-Site Power Station Facilities site.



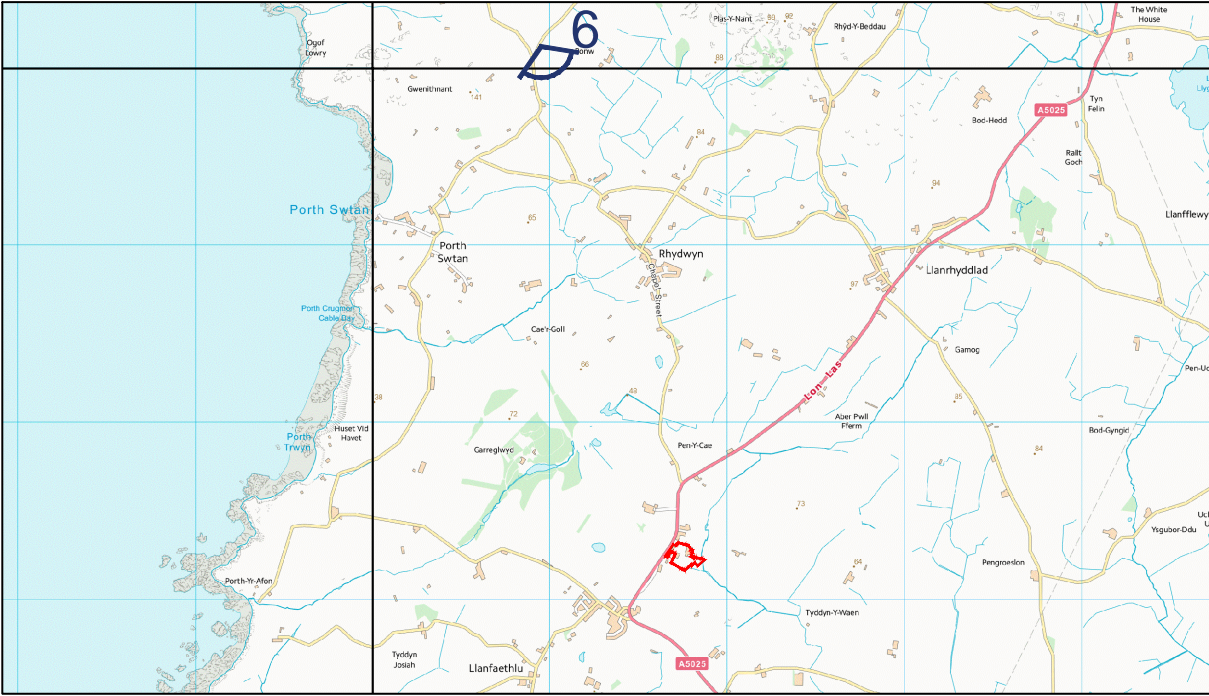
1.0	MAR 18	DCO submission	HNPWL	HNPWL	HNPWL	HNPWL
Rev.	Date	Purpose of revision	Drawn	Check'd	Rev'd	Appr'd
Client			<div><div>HORIZON</div><div>NUCLEAR POWER</div></div>			
Project			WYLFA NEWYDD PROJECT ENVIRONMENTAL STATEMENT			
Drawing title			Appendix E10-4 Representative Viewpoint 5			
Scale @ A3	DRG SCALE				DO NOT SCALE	
Jacobs No.	60PO8077					
Client No.						
Drawing No.	60PO8077_DCO_VOL_E_APP_10_04_05					
This drawing is not to be used in whole or in part other than for the intended purpose and project as defined on this drawing. Refer to the contract for full terms and conditions.						

FIGURE E10_04_06

- Legend
- Off-Site Power Station Facilities
 - Viewpoint position and direction

- Notes:
- For larger plans showing all viewpoint locations, refer to figure E10-5; (Application Reference Number: 6.5.27)
 - Photograph taken in June 2017
 - All photographs has been taken with an SLR 50mm focal length lens or digital equivalent and processed as the standard size of 6" by 4". Panoramas may have been cropped but have not been altered or resized.

Viewpoint 6 - Representative view from near Mynydd y Garn, approximately 3km to the north-west of the Off-Site Power Station Facilities site.



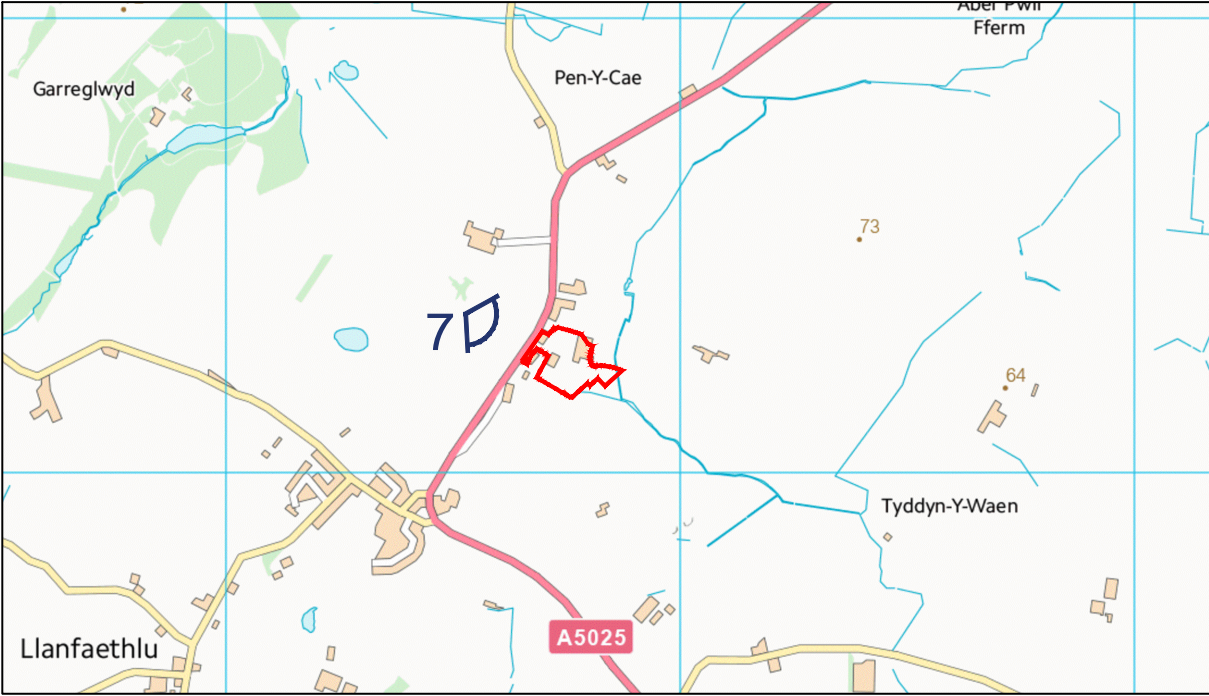
1.0	MAR 18	DCO submission	HNPWL	HNPWL	HNPWL	HNPWL
Rev.	Date	Purpose of revision	Drawn	Check'd	Rev'd	Appr'd
Client			<div><div>HORIZON</div><div>NUCLEAR POWER</div></div>			
Project			WYLFA NEWYDD PROJECT ENVIRONMENTAL STATEMENT			
Drawing title			Appendix E10-4 Representative Viewpoint 6			
Scale @ A3	DRG SCALE				DO NOT SCALE	
Jacobs No.	60PO8077					
Client No.						
Drawing No.	60PO8077_DCO_VOL_E_APP_10_04_06					
This drawing is not to be used in whole or in part other than for the intended purpose and project as defined on this drawing. Refer to the contract for full terms and conditions.						

FIGURE E10_04_07

- Legend
- Off-Site Power Station Facilities
 - Viewpoint position and direction

- Notes:
- For larger plans showing all viewpoint locations, refer to figure E10-5: (Application Reference Number: 6.5.27)
 - Photograph taken in March 2016
 - All photographs has been taken with an SLR 50mm focal length lens or digital equivalent and processed as the standard size of 6" by 4". Panoramas may have been cropped but have not been altered or resized.

Viewpoint 7 - Representative view from a nearby Public Right of Way located within the Area of Outstanding Natural Beauty, approximately 150m to the west of the Off-Site Power Station Facilities site.



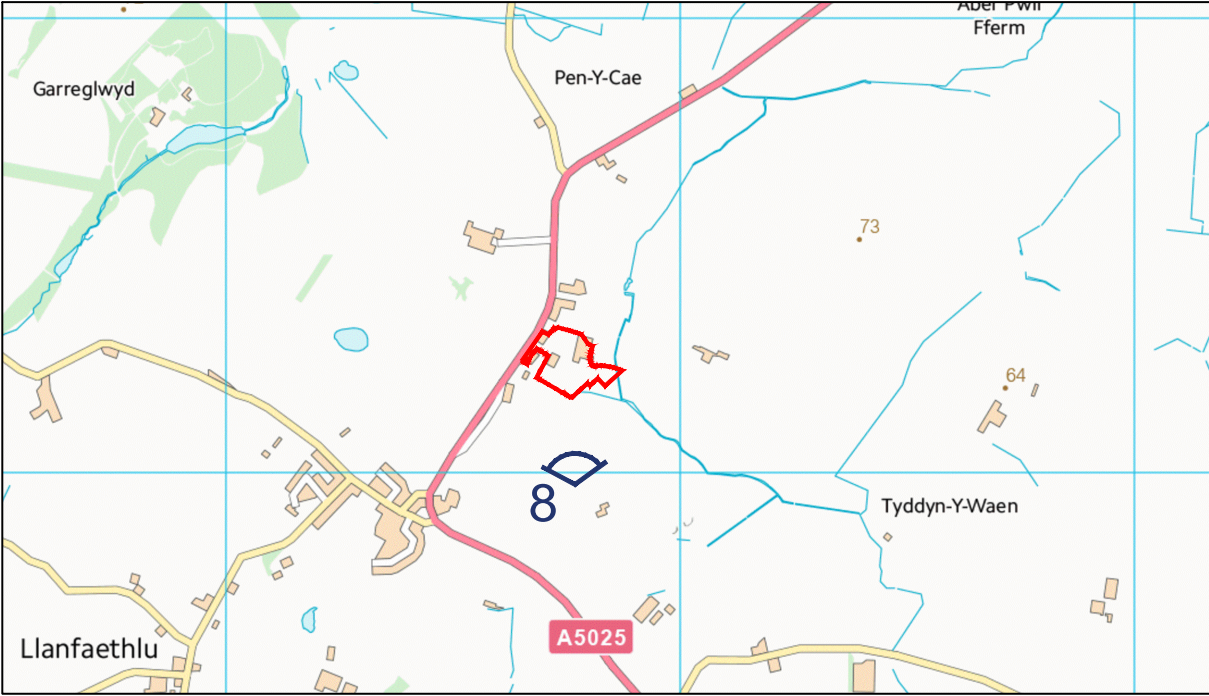
1.0	MAR 18	DCO submission	HNPWL	HNPWL	HNPWL	HNPWL
Rev.	Date	Purpose of revision	Drawn	Check'd	Rev'd	Appr'd
Client			<div><div>HORIZON</div><div>NUCLEAR POWER</div></div>			
Project			WYLFA NEWYDD PROJECT ENVIRONMENTAL STATEMENT			
Drawing title			Appendix E10-4 Representative Viewpoint 7			
Scale @ A3	DRG SCALE				DO NOT SCALE	
Jacobs No.	60PO8077					
Client No.						
Drawing No.	60PO8077_DCO_VOL_E_APP_10_04_07					
This drawing is not to be used in whole or in part other than for the intended purpose and project as defined on this drawing. Refer to the contract for full terms and conditions.						

FIGURE E10_04_08

- Legend
- Off-Site Power Station Facilities
 - Viewpoint position and direction

- Notes:
- For larger plans showing all viewpoint locations, refer to figure E10-5: (Application Reference Number: 6.5.27)
 - Photograph taken in March 2016
 - All photographs has been taken with an SLR 50mm focal length lens or digital equivalent and processed as the standard size of 6" by 4". Panoramas may have been cropped but have not been altered or resized.

Viewpoint 8 - Representative view from a nearby Public Right of Way, approximately 170m to the south of the Off-Site Power Station Facilities site.



1.0	MAR 18	DCO submission	HNPWL	HNPWL	HNPWL	HNPWL
Rev.	Date	Purpose of revision	Drawn	Check'd	Rev'd	Appr'd
Client			<div><div>HORIZON</div><div>NUCLEAR POWER</div></div>			
Project			WYLFA NEWYDD PROJECT ENVIRONMENTAL STATEMENT			
Drawing title			Appendix E10-4 Representative Viewpoint 8			
Scale @ A3	DRG SCALE				DO NOT SCALE	
Jacobs No.	60PO8077					
Client No.						
Drawing No.	60PO8077_DCO_VOL_E_APP_10_04_08					
This drawing is not to be used in whole or in part other than for the intended purpose and project as defined on this drawing. Refer to the contract for full terms and conditions.						